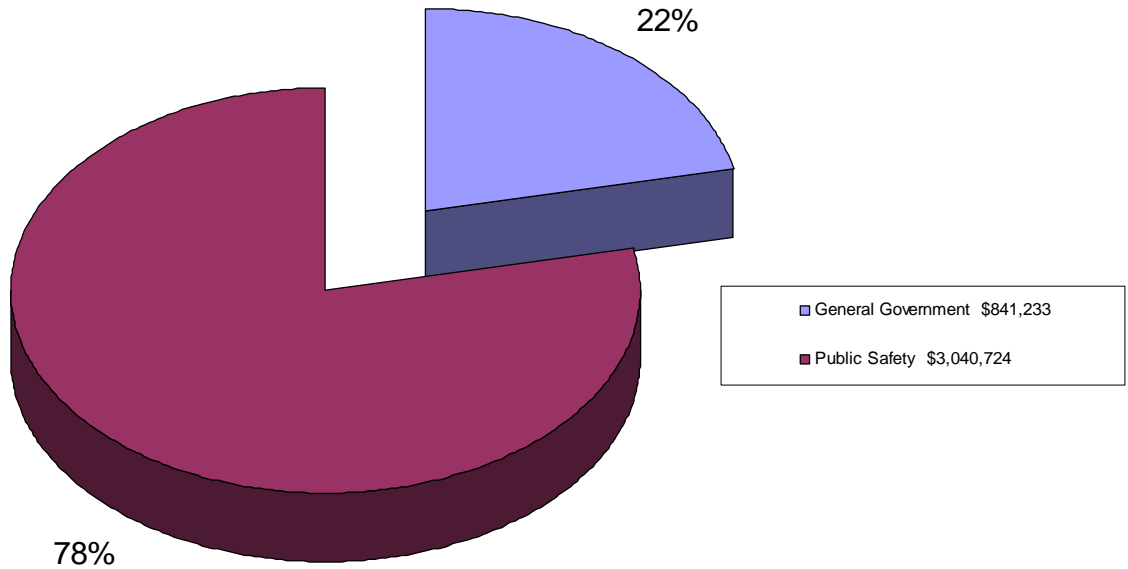
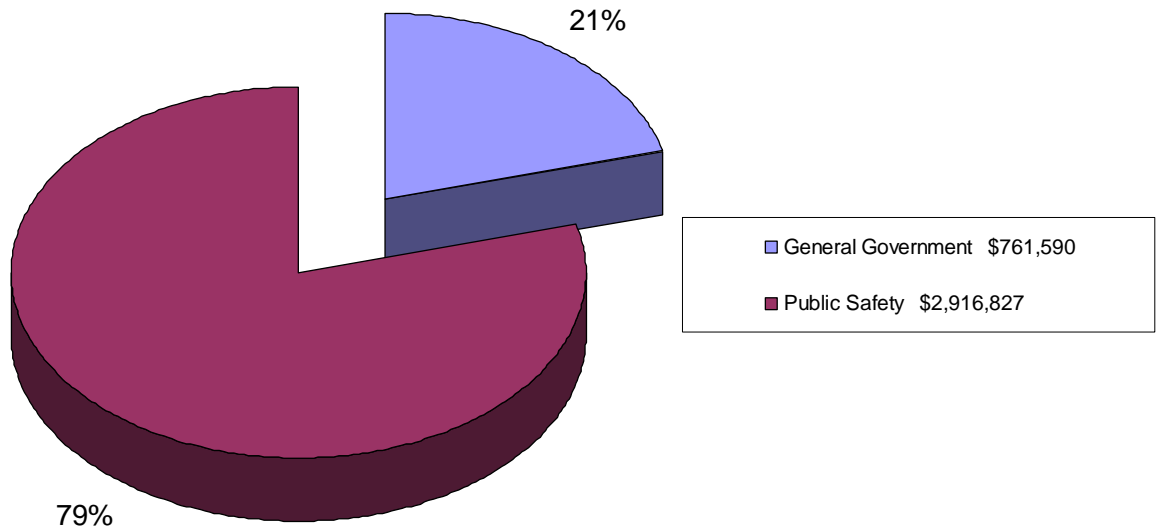


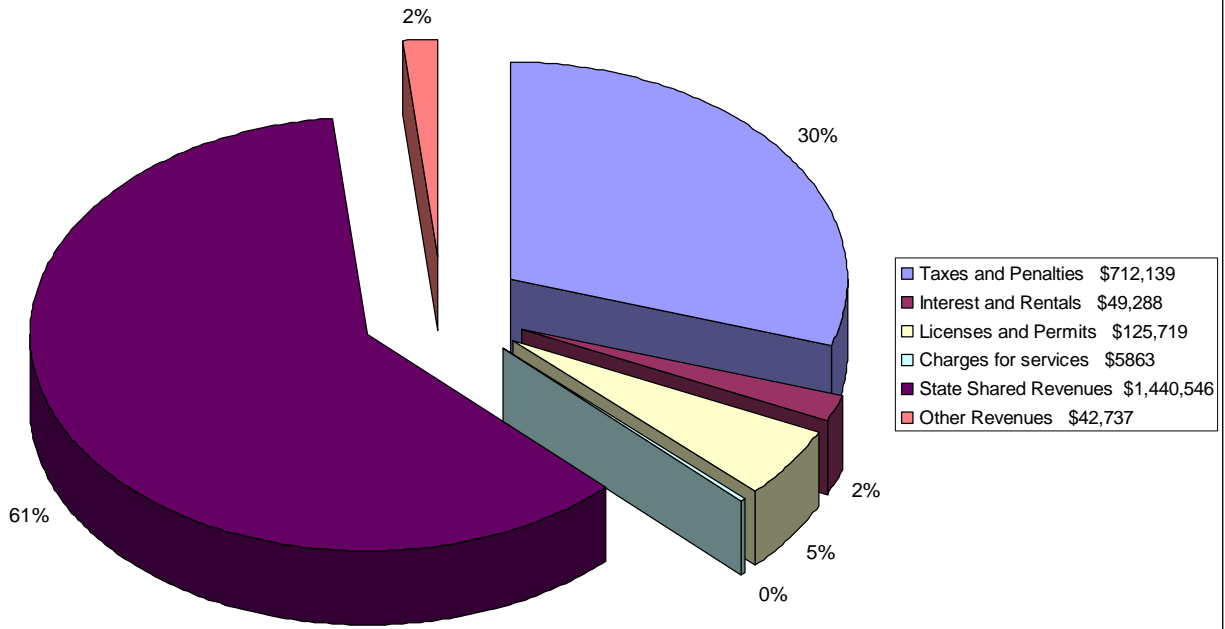
2006 Budgeted Expenditures
\$3,881,957



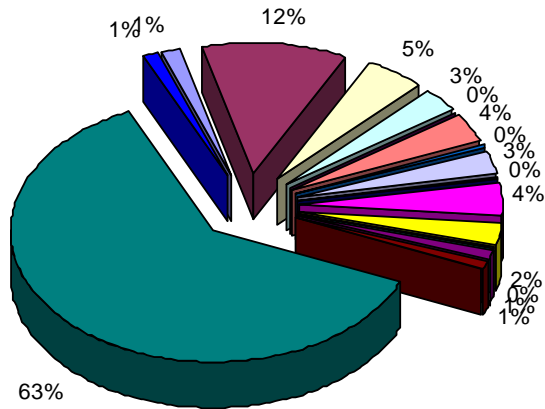
2006 Actual Expenditures
\$3,678,417



2006 Actual General Fund Revenues
\$2,376,292

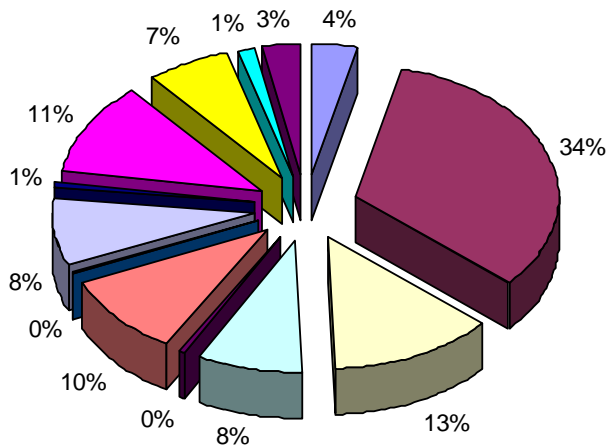


2006 General Gov't Expenditures \$2,121,590



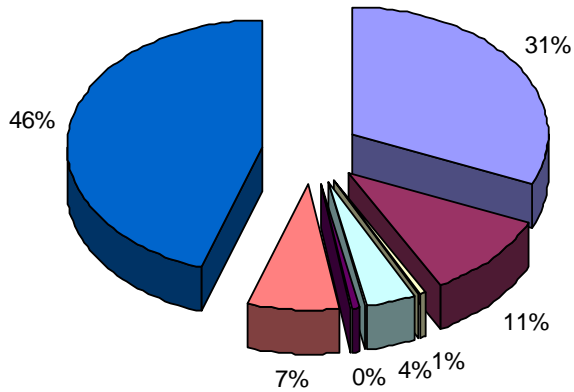
- Township Board \$28,355
- Supervisor \$249,452
- Clerk \$99,069
- Treasurer \$63,664
- Committees \$3,039
- Retiree Health Insurance \$77,650
- Board of Review \$1,138
- Township Hall \$62,602
- Cemetery \$4,510
- Comm Econ Dev \$87,408
- Public Works \$51,251
- Other \$9,235
- Elections \$24,217
- Trans to Building Dept \$20,000
- Transfers to PS \$1,312,773
- Other Transfers \$27,227

2006 General Gov't Expenditures without Transfers \$761,590



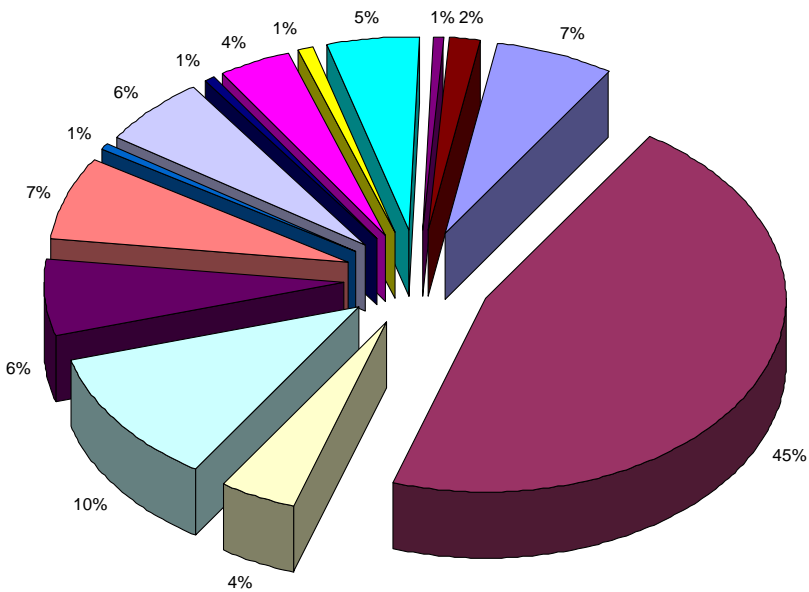
- Township Board \$28,355
- Supervisor \$249,452
- Clerk \$99,069
- Treasurer \$63,664
- Committees \$3,039
- Retiree Health Insurance \$77,650
- Board of Review \$1,138
- Township Hall \$62,602
- Cemetery \$4,510
- Comm Econ Dev \$87,408
- Public Works \$51,251
- Other \$9,235
- Elections \$24,217

**2006 Public Safety Revenues
\$2,916,826**



PS Property Tax & Penalties	\$915,486
State Sources	\$314,727
Contributions from local units	\$16,474
Fines and Forfeitures	\$125,534
Charges for services	\$14,375
Other revenues	\$217,427
Transfers from General Fund	\$1,312,773

**2006 Actual PS Expenses
\$2,916,826**



Admin Payroll	\$189,824
PS Officer Payroll	\$1,336,639
Payroll Taxes	\$120,487
Health, Life, Disability Ins	\$331,708
Retirement Contributions	\$183,554
Retiree Healthcare	\$201,559
Office Supplies	\$16,196
Liability Expenses	\$174,601
Communication Expenses	\$15,205
Vehicle Expenses	\$114,675
Building Maintenance	\$24,150
Vehicle/Equip Purchases	\$139,798
Utilities	\$21,305
Miscellaneous	\$47,125